

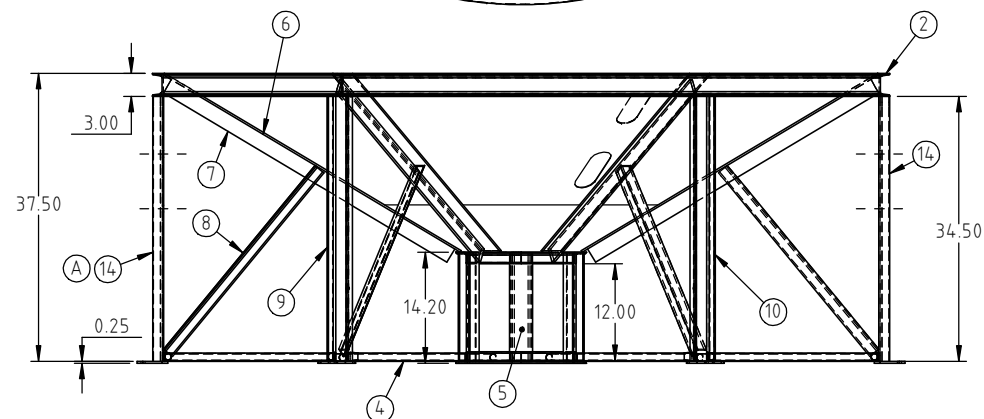
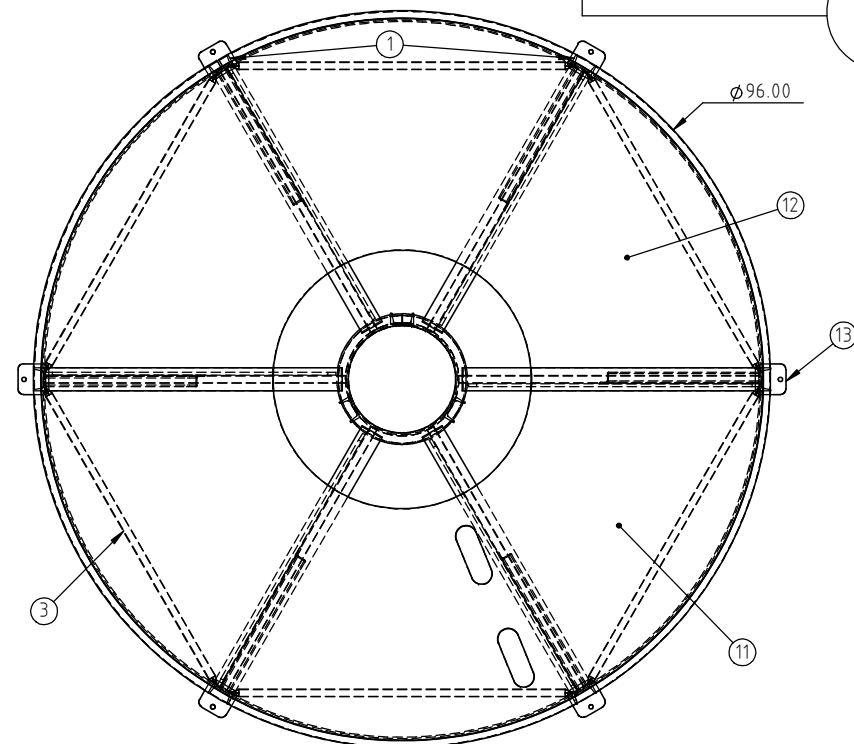
© DEN HARTOG INDUSTRIES, INC.


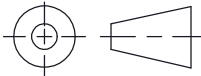
Copyright. All information furnished within this document, electronic file or design correspondence is the property of Den Hartog Industries, Inc. and shall not be used, disclosed to others or copied without the expressed written consent of Den Hartog Industries, Inc.

CB096-30ST

A

KEY	PART NUMBER	DESCRIPTION	QTY.
1	CB096-30ST-1	STAND LEG	2
2	CB096-30ST-2	CHANNEL RING	1
3	CB096-30ST-3	OUTSIDE BASE TUBING	6
4	CB096-30ST-4	CENTER TO LEG TUBING	6
5	12763	RING, CENTER STAND	3
6	CB096-30ST-6	SUPPORT STRAP	6
7	CB096-30ST-7	SUPPORT STRAP	6
8	CB096-30ST-8	ANGLE SUPPORT	6
9	CB096-30ST-9	STAND CHANNEL LEG (RIGHT)	1
10	CB096-30ST-10	STAND CHANNEL LEG (LEFT)	1
11	12764	PAN, W/HOLES	1
12	12765	PAN, NO HOLES	1
13	12750	1/4" X 4" X 4" LEG PAD	6
14	CB096-30ST-11	STAND LEGS, POWDER COAT	2



				DRAWN / DATE DHJ 10/25/09	MATERIAL	 Den Hartog INDUSTRIES, INC. Ace Roto-Mold Injection Molding Blow Molding Sowjoy 4010 HOSPERS DRIVE S. BOX 425, HOSPERS, IOWA 51238-0425
A	HOLES FOR POWDER COATING ADDED TO TWO LEGS COMPONENT TABLE UPDATED	ADH 7/22/11	2254	APPRD. / DATE REH 12/5/09		
REV	DESCRIPTION	BY / DATE	CCN			
	ALL DIMENSIONS ARE IN DECIMAL INCHES TOLERANCES UNLESS OTHERWISE SPECIFIED					
POLYETHYLENE ±1% @ 68°F		THIRD ANGLE PROJECTION ANSI 14.5M 		SHOT WEIGHT:	NOTES:	DESCRIPTION ø96 CONE BOTTOM 30° STAND
METAL DECIMAL ± .125" FRACTION ± 1/4" ANGLE ± 1°				SHIPPING WEIGHT: 553.00 LBS		SCALE N.S.
				FINISH: POWDER COATING, BLACK TILE, 40012		PART NO. CB096-30ST