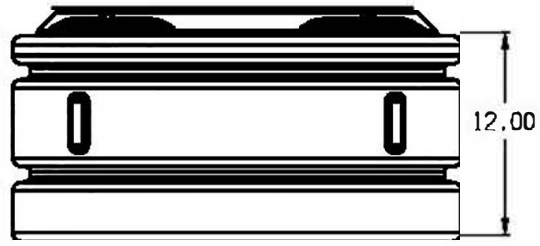
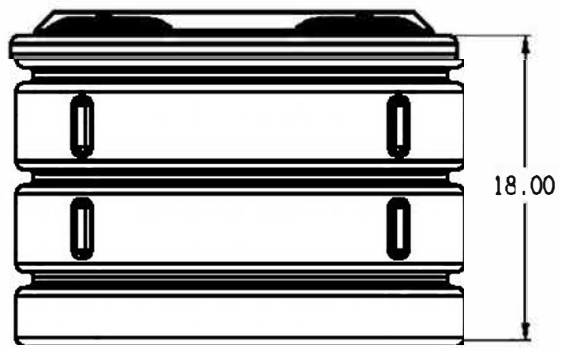


6" RISER
P/N 34300028



12" RISER
P/N 5160000W94201



18" RISER
P/N 34300030

FEATURES:
 FULL 20° ACCESS.
 RIBBED DESIGN FOR INCREASED STRUCTURAL CAPACITY.
 S11 PATENTED LOCKING LUG INTERFACE AT THE TOP AND BOTTOM OF RISERS.
 MATES WITH ALL S11 SEPTIC AND CISTERN TANKS AND S11 DOUBLE WALL LID
 MATERIAL MEETS FDA REQUIREMENTS [21 CFR 177.1520] FOR FOOD CONTACT.

(all dimensions in inches)

PART #:	6" RISER	34300028
	12" RISER	5160000W94201
	18" RISER	34300030
REF#:	0000	02/18/08

6, 12", & 18" SEPTIC/CISTERN RISERS