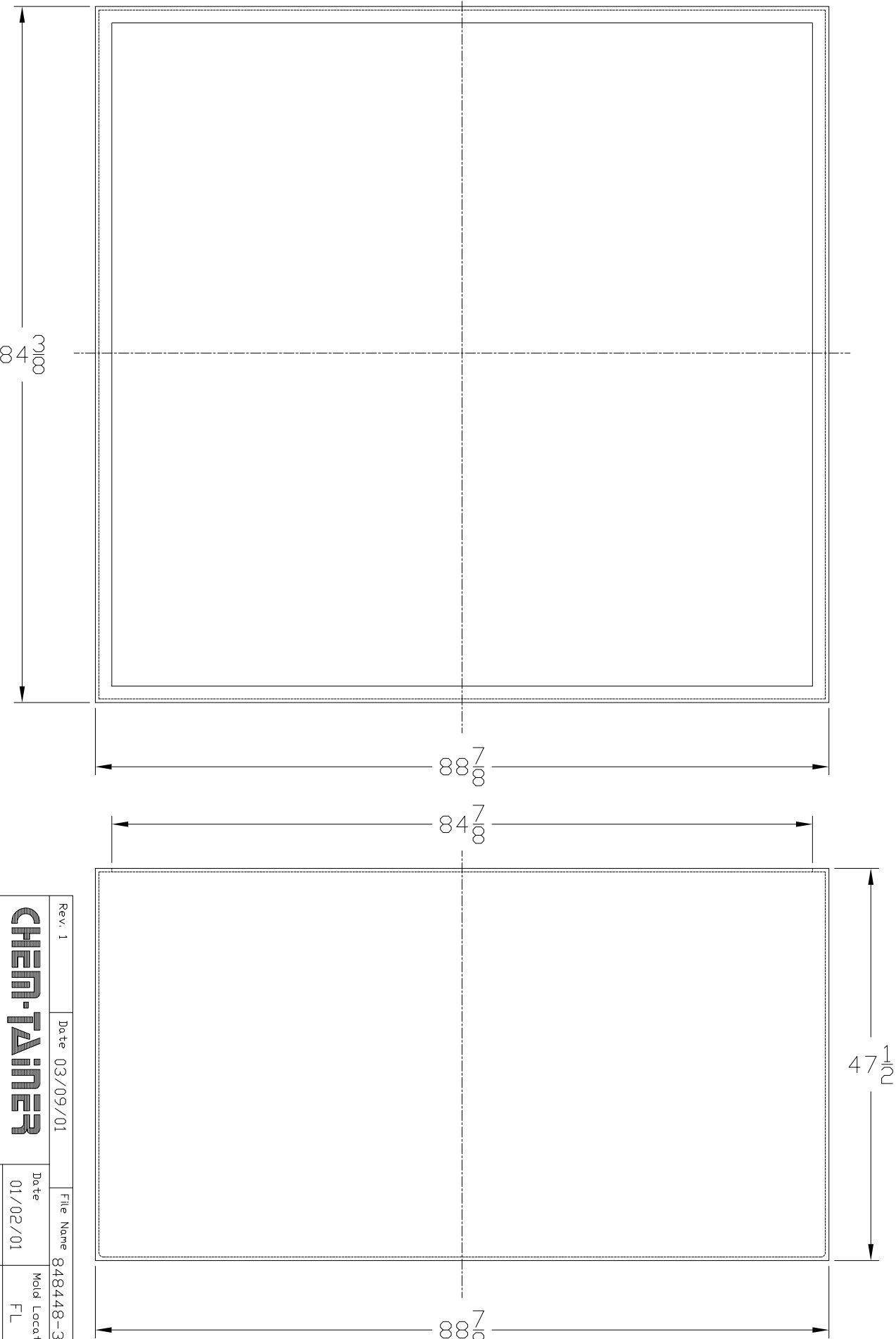


THIS DRAWING & DESIGN IS THE PROPERTY OF CHEM-TAINER INDUSTRIES INC. IT MAY NOT BE USED FOR ANY PURPOSE OTHER THAN BY THE OWNER. CHEM-TAINER DOES NOT AUTHORIZE THE REPRODUCTION OR CONVEYANCE OF ANY INFORMATION CONTAINED HEREIN.

ALL DIMENSIONS SHOWN ARE OUTSIDE PART DIMENSIONS IN INCHES, AND VARY BY THE STANDARD ROTATIONAL MOLDING TOLERANCE OF +2/-3%.



Rev. 1	Date 03/09/01	File Name 848448-3
<b>CHEM-TAINER</b>	Date 01/02/01	Mold Location FL
	Drawn By: IIA	Cust. Rep.
361 Neptune Ave. W.Babylon, NY 11704 (631) 661-8300 Fax: (631) 661-8209		
TITLE		
1450 GAL. CONTAINMENT BASIN		

Part #	Dwg. #
84844800A	C-848448-13